



ROUTE-MAP-TO-WOC2025

Invitation
World Cup
Spectator Competitions
28.-29.9.2024



Invitation

World Cup – spectator competitions 28.–29.9.2024

Organizer

Kuopion Suunnistajat ry

Officials

Event Director: Jari Kymäläinen, jari.kymalainen@woc2025.fi

Course setters: Markku Kotamäki, Raimo Antikainen

Information: Sakari Hyvönen, +358 452314747, sakari.hyvonen@woc2025.fi

Controller: Pekka Hiltunen (Nurmeksien Sepot)

Webpage

www.woc2025.fi

Competititon

Saturday: middle distance

Sunday: middle distance

Classes

H/D21, H/D17–20, H/D16, H/D35–85, H/D14, H/D12, H/D12TR, H/D10RR, H/D8RR, RR Avoin

Winning times

The estimated winning times are the ideal times for the competition winner in accordance with the rule change of December 2023.



Competition center

The address of the competition center:
Lastulahdentie 188, 73320 Kuopio.

The driving time from Kuopio to the competition center is approximately 52 minutes and from Tahko, it is 21 minutes.

Driving directions

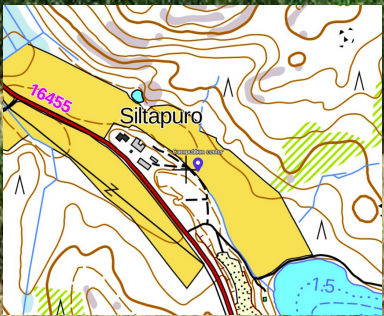
There will be guidance from the intersection of Nurmeksentie (Route 75) and Lastulahdentie (Route 16455) on [Google Maps](#). Signs will also be at the intersection of [Lastulahdentie \(Route 16455\)](#) and [Hipantie \(Route 16431\)](#) on [Google Maps](#). Guidance will be in place on Saturday, September 28th, starting at 8:00 AM. Parking is available along the road next to the competition center.

Distances to the Start

The distance to the start from the competition center is 1.4 km on Saturday and 1.8 km on Sunday. The distance from the finish line to the competition center is approximately 1 km.

First Start

The first starts are at 10:00 AM on Saturday and 9:00 AM on Sunday.



[Google Maps](#)



The schedule for the public competition allows spectators to watch top performances by the world's best athletes both in the World Cup and the World Championships!



Registration

Registration is done through the Finnish Orienteering Federation's Irma system. Please ensure that your information is correct. International orienteers participating in national categories should also register via Irma. For any issues, contact sakari.hyvonen@woc2025.fi via email. Please provide the following details by email:

- First name
- Last name
- Year of birth
- Nationality
- Finnish club you represent (optional)
- Your Emit card number
- Indicate if you need a rental Emit card (5 €)

The registration deadline is Sunday, September 22, 2024, by 11:59 PM. Late registration is possible until Tuesday, September 24, 2024, by 11:59 PM with an increased fee. A cancellation fee of 5 € will be charged for any cancellations made before the registration deadline.

Participation Fee

The participation fee is paid through Irma at the time of registration.

- H/D21: 35 €
- H/D35–85: 25 €
- H/D17–20, H/D16, H/D14, H/D12, H/D12TR, H/D10RR, H/D8RR, RR Open: 15 €

The fee for late registration is 1.5 times the standard fee.



Map

Cartographers: Timo Joensuu and Janne Weckman

Scale:

- 1:10,000: H/D21, H/D35-40, H/D20, H/D18, H/D16
- 1:7,500: H/D45-85, H/D14, H/D12, H/D12TR, H/D10RR, H/D8RR, RR Open

Contour Interval: 5 meters

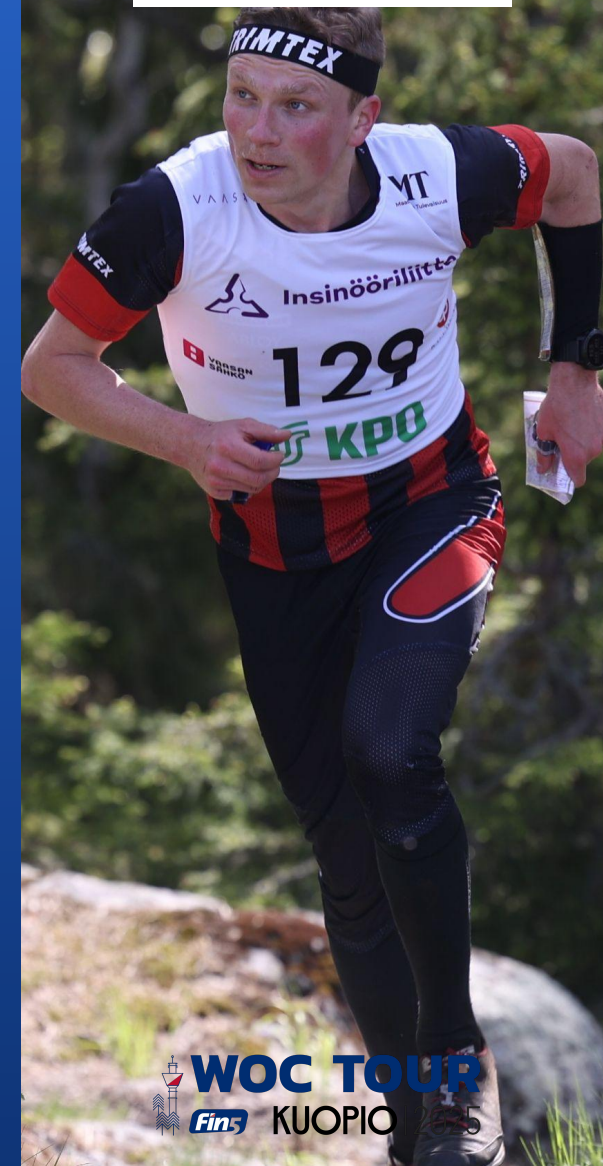
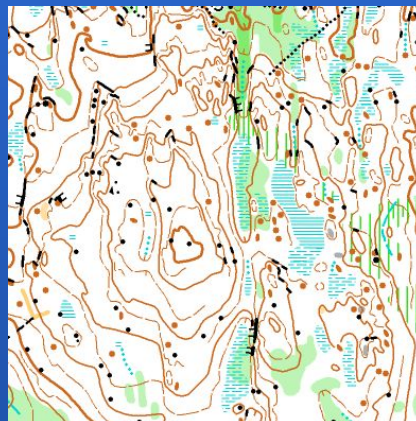
Printing: Color printing, September 2024

Maps are provided in plastic cases.

Old maps.

Punching System

The competition will use the Emit system. The organizer will provide an Emit card for those who did not provide an Emit number during registration. Rental Emit cards (5 €) are available from the event organizer and can be picked up at the competition center info desk. The organizer will charge 95 € for any lost Emit cards. If your Emit card number changes, please notify the results service at tiina.torvela@woc2025.fi.



Changing and Showering

There are no changing facilities. Participants can wash up in the cool lake water at the Lastukoski boat and swimming area, which is 4.6 km from the competition center.

Terrain Description

The competition terrain consists of varied Finnish forested areas used for forestry, with vegetation in different stages of growth affecting both runnability and visibility. The forest is predominantly pine. Vegetation is typically denser in the low-lying areas, especially from late summer to autumn. The terrain includes small, detailed slopes and areas with few distinct features, making orienteering more challenging. Elevation changes are minimal, with no steep slopes or high cliffs.

Training Opportunities

The [2024 WOC Training Package](#) is available for teams preparing for WOC 2025. Please note the competition and training embargo areas on [Google Maps](#) for WOC 2025.

Recreational Orienteering (open courses)

On both Saturday and Sunday, recreational orienteering is available with three course options:

- A course: approximately 5.5 km
- B course: approximately 4.0 km
- C course: approximately 2.5 km



Accommodation

You can find offers from our partners on our website www.woc2025.fi. Use the code **woc2025** when making your reservation.

Transportation and Parking

There is no public transportation available. Roadside parking is available next to the competition center, free of charge.

Kuvat: SSL, Kaisu Kolehmainen



ROUTE-MAP-TO-WOC2025



oomi KUOPIO



Hertz

GRANO

SAVON
SANOMAT



SUUNNISTAJAN
KAUPPA

Hope